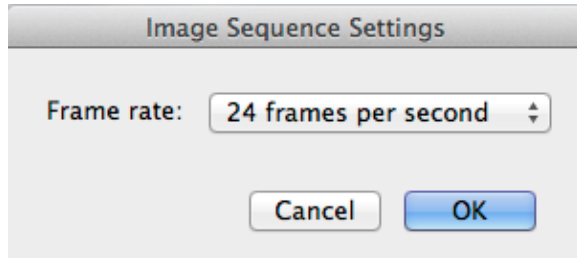


II. Creating an Image Sequence in Quicktime 7 Pro

1. Import Image Sequence

Open Quicktime 7 Pro and from the File menu choose Open Image Sequence...

Browse to the FRAMES folder and select the first image in the sequence. Click open.

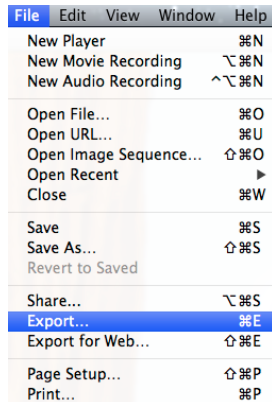


Choose 24 frames per second and click OK and a very large Quicktime movie will open that is too big to play.

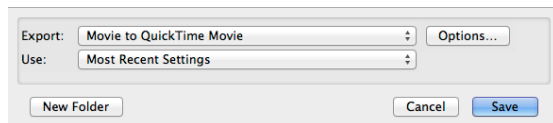
*If you have shot your animation single frame at 12FPS you should import at 12 frames per second.

2. Resizing your QT Movie

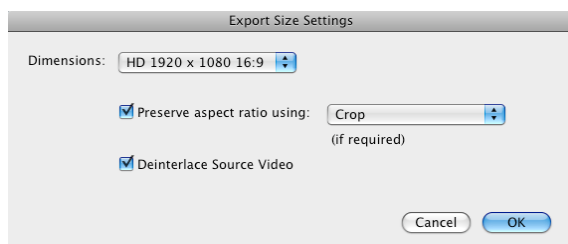
From the file menu choose Export...



In the Save Exported File As window set *change the Export setting to Movie* to Quick Time Movie and click on Options.

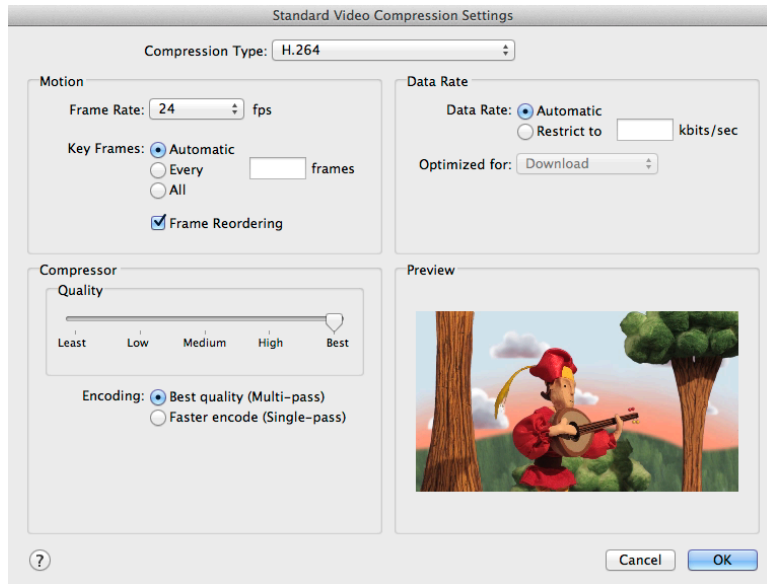


In the Size tab choose HD 1920 x 1080 16:9 (choose HD 1280 x 720 for medium quality HD). Check Preserve Aspect Ratio using Crop. Check Deinterlace Source Video.

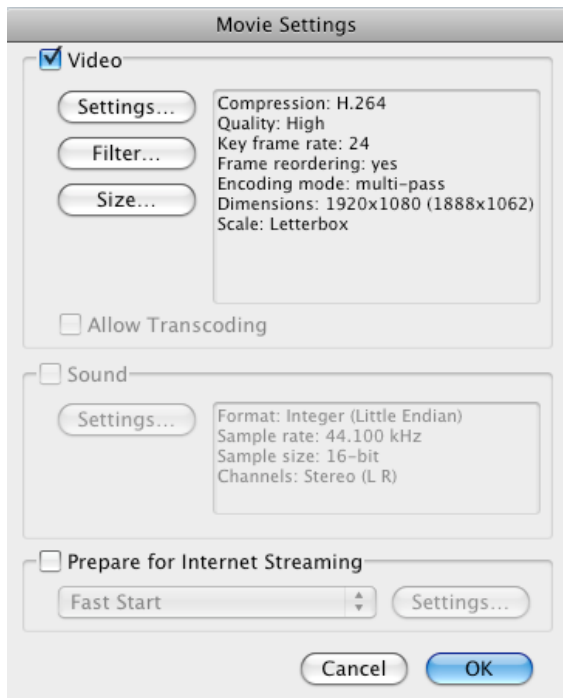


In the Settings tab choose H.264

*If you have shot your animation single frame at 12FPS you should still export at 24 frames per second.



Your Movie Setting should be as follows. . .



Click OK and browse to destination folder and name accordingly.

Close original QT movie. Open newly exported movie in QT and play back at full screen (Apple-F) to test animation.